

# FEATURES AND BENEFITS

## Inner Strength

The skin can be applied to both the HD 37mm and 50mm tubes with either tape or spline.

## Modular Operations

The modular operating system accomodates chain and motorised applications.

Universal spring loaded end plug mounts shades securely and provides for smooth and easy installation.

## Quality Aesthetics

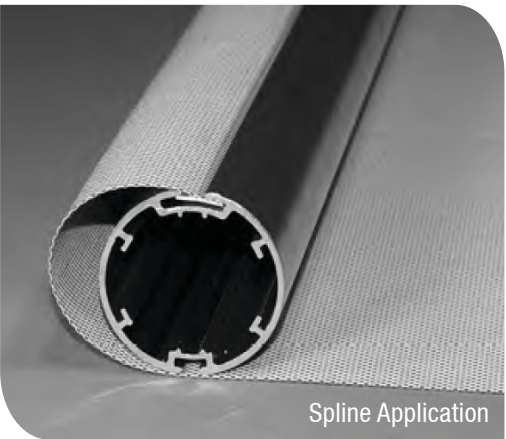
Components are available in a range of four colour options: White, Black, Anodised, and Magnolia.

## Complete Suite of Products

An independent linking option is available for configurations that require multiple operation and an extension bracket is also available to adjust the intermediate opening (up to 150mm wide) and work around centre mullions etc.

A sleek (87mm projection) and contemporary headbox system is available in both anodised and powder coated finishes with colour coded endcaps. The Headbox System can be installed in both reveal and face fit positions and has a snap lock cover for easy access and maintenance.

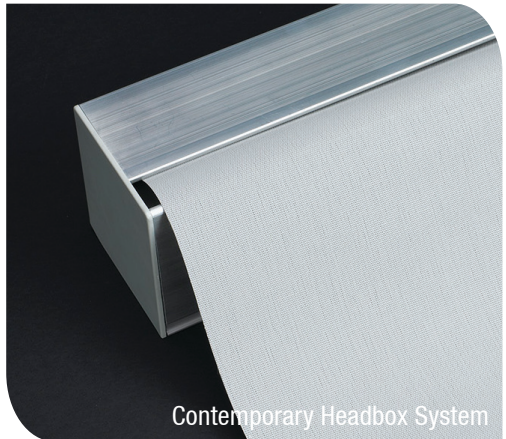
The universal components and modular design minimise the stock investment and simplify the number of components required for a comprehensive roller system.



Spline Application



Four Colour Options



Contemporary Headbox System



Removable Chain Mechanism

# HunterDouglas QUANTUM Roller Blind Hardware

## Product Information





# FEATURES AND BENEFITS

## SLEEK FINISH

Bracket covers have been developed to ensure a high quality sleek finish for all blinds. Perfect for all face fit installations.

## UNIVERSAL SIMPLICITY

All brackets are universal, ensuring you never supply incorrect components for installation. The Universal brackets also assist with reducing inventory – simply perfect!

Choose from 38mm & 55mm brackets, providing an installation solution for the most challenging projects and maximising capacity for the lengthiest drops.

## A WHOLE NEW LEVEL

The integrated product leveler allows the installer to adjust the blind for windows that are not square. Alternatively this can be used to adjust the intermediate opening on linked blinds (optional accessory).

## LITE LIFT

The durable standard clutch is available with two ratio mechanisms 1:1 and 1:1.75 which enables a heavier blind to be lifted without the need of a spring booster. It is also aesthetically pleasing in one size format which is capable of lifting a range of shade weights.

Chain drive is easily removable and can be shipped as a separate unit to minimise transit damage.

## DOUBLE FLEXIBILITY

Two compact dual bracket designs are available:

The standard (under) roll configuration ensures the blind skin can be fitted close to the window minimizing light into the room.

The reverse (over) roll configuration provides a self-pelmet effect, covering the low blind and is available with same side controls.

Both dual brackets have universal mounting options (top or face installation) and can be used in conjunction with the linking systems.

## CORE STRENGTH

Three robust aluminium roller tubes have been engineered for minimal deflection and large expanses - 37mm, Heavy Duty (HD) 37mm and 50mm. The option of 37mm and HD37mm tubes allows you to create a uniformed look throughout the project, no matter how wide the blind requirements.

## FAULTLESS IDLE

The unique idle component provides an addition 14mm of tolerance for correction of measuring and installation mistakes when required. The idle component also features a locking ring for ultimate safety.

## FINE ADJUSTMENTS

Two standard linked system options are available:

The Aligner Set – maximises flexibility during installation with a fine adjustment option for aligning the tail blind.

The Connector Set – minimises the intermediate light gap on linked configurations.

Uniquely both linking systems have 15° degrees play for added flexibility during installation.

